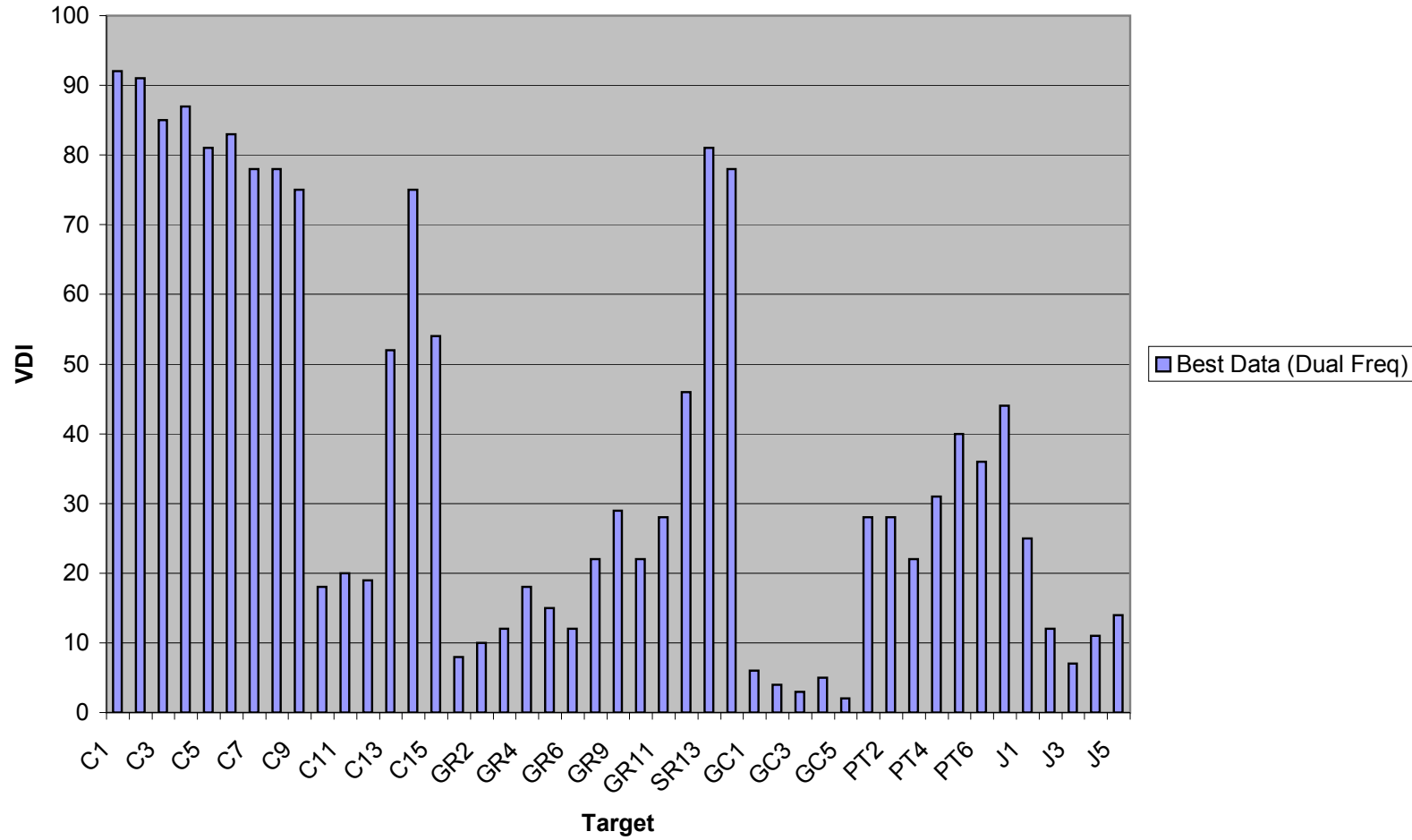


DFX VDI ID

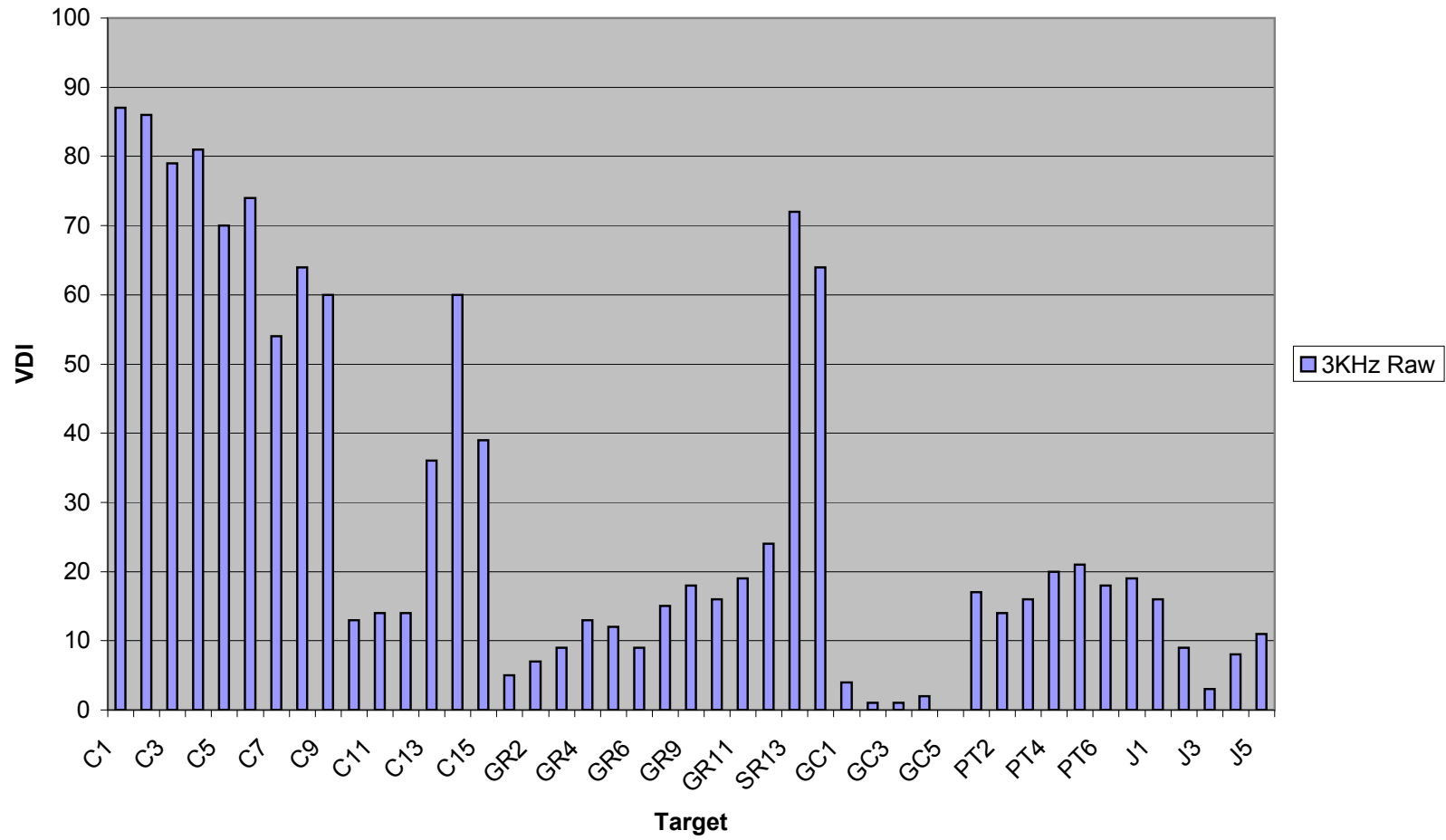
Target	Type	Code	Best Data (Dual Freq)	3KHz Norm	15KHz Norm	3KHz Raw	15KHz Raw
Morgan Silver Dollar 1898 O	Coin	C1	92	92	92	87	93
Eisenhower Dollar 1776-1976 D	Coin	C2	91	91	92	86	93
Walking Liberty Half Dollar 1944	Coin	C3	85	85	87	79	91
Kennedy Half Dollar 1776-1976 D	Coin	C4	87	87	90	81	92
Barber Quarter Dollar 1893	Coin	C5	81	81	82	70	89
Washington Quarter Dollar 1993 D	Coin	C6	83	83	85	74	90
Mercury Head Dime 1945	Coin	C7	78	78	79	54	87
Roosevelt Dimes 1946	Coin	C8	78	78	79	64	87
Roosevelt Dime 1996	Coin	C9	75	76	76	60	86
Liberty Head Five Cents 1901	Coin	C10	18	18	18	13	42
Buffalo Nickel Five Cents 1936	Coin	C11	20	20	20	14	45
Jefferson Five Cents 1995	Coin	C12	19	18	19	14	43
Indian Head Cent 1902	Coin	C13	52	52	59	36	78
Lincoln Cent (Wheat Ear) 1958	Coin	C14	75	75	73	60	85
Lincoln Cent (Memorial) 1993	Coin	C15	54	54	61	39	79
Toe Ring	Gold Ring	GR1	8	5	8	5	15
Pinky Ring	Gold Ring	GR2	10	8	10	7	21
Small Diamond Ring 1	Gold Ring	GR3	12	7	11	9	24
Small Diamond Ring 2	Gold Ring	GR4	18	15	19	13	43
Pinky Cross Ring	Gold Ring	GR5	15	15	16	12	34
Medium Diamond Ring	Gold Ring	GR6	12	11	12	9	26
Medium Nugget Ring	Gold Ring	GR8	22	21	22	15	51
Medium Diamond Ring	Gold Ring	GR9	29	25	29	18	60
Large Nugget Ring	Gold Ring	GR10	22	21	24	16	49
Large Diamond Ring	Gold Ring	GR11	28	27	28	19	58
Large Matrimonial Band	Gold Ring	GR12	46	38	48	24	72
Silver Ring 1	Silver Ring	SR13	81	80	84	72	91
Silver Ring 2	Silver Ring	SR14	78	78	80	64	88
Medium Gold Chain	Gold Chain	GC1	6	5	7	4	12
Thin Chain with Pendant	Gold Chain	GC2	4	2	4	1	7
Medium Chain	Gold Chain	GC3	3	2	3	1	6
Small Chain	Gold Chain	GC4	5	3	5	2	10
Small Tennis Bracelet	Gold Chain	GC5	2	2	2	0	3
Pull Tab 1	Pull Tab	PT1	28	25	28	17	57

Pull Tab 2	Pull Tab	PT2	28	25	28	14	57
Pull Tab 3	Pull Tab	PT3	22	21	22	16	51
Pull Tab 4	Pull Tab	PT4	31	29	31	20	64
Pull Tab 5	Pull Tab	PT5	40	32	40	21	68
Pull Tab 6	Pull Tab	PT6	36	27	36	18	66
Pull Tab 7	Pull Tab	PT7	44	35	44	19	70
Alluminum Slaw Large	Junk	J1	25	21	22	16	50
Aluminum Slaw Medium	Junk	J2	12	11	12	9	26
Aluminum Slaw Small	Junk	J3	7	2	5	3	13
Candy Foil	Junk	J4	11	11	11	8	23
Eraser Tip	Junk	J5	14	12	14	11	31

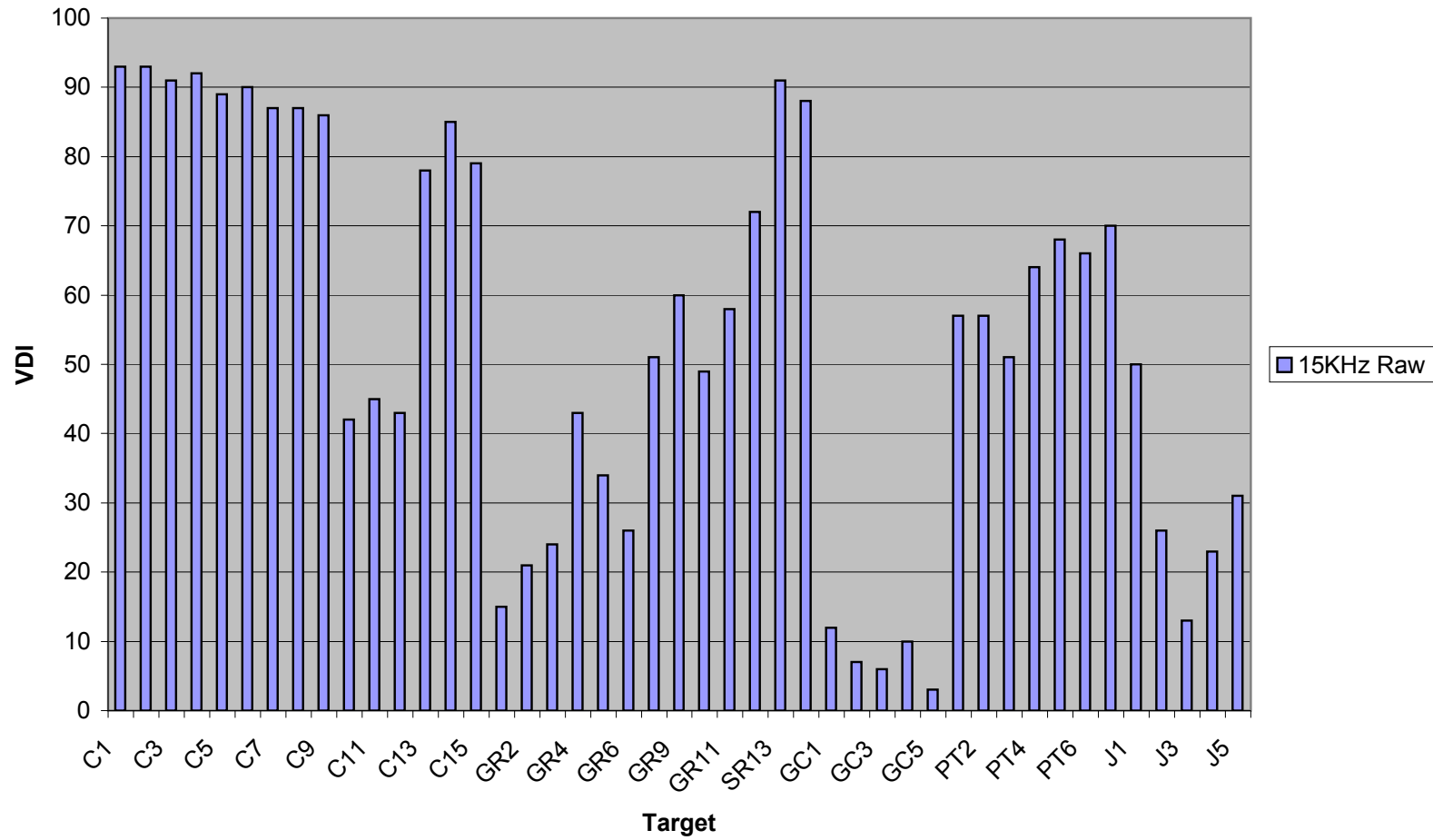
Best Data (Dual Freq)



3KHz Raw



15KHz Raw



Dual and Single Frequency Comparison

